

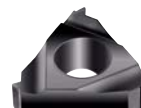


Insert in hard metal, with internal threading

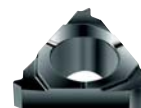
Insert with complete profile, for internal, left-hand threading ISO 60°, for threading operations on all materials.



NL-M



M 35



PK 25 - PK 30

Code	€	Pz.	Type	pitch (mm)		P	M	K	N	S	H
A574500297	---	◇ 2	TN11 NL 100 M PK 30	1	Vc m/min.	135-165	80-95	125-155	200-575	25-45	25-30
A574500300	---	◇ 10	TN11 NL 100 M U 9035	1	Vc m/min.	135-165	80-95	125-155	200-575	25-45	25-30
A574500303	---	◇ 2	TN11 NL 100 M M 35	1	Vc m/min.	-	80-120	-	200-450	25-40	-
A574500397	---	◇ 2	TN11 NL 125 M PK 30	1,25	Vc m/min.	135-165	80-95	125-155	200-575	25-45	25-30
A574500400	---	◇ 10	TN11 NL 125 M U 9035	1,25	Vc m/min.	135-165	80-95	125-155	200-575	25-45	25-30
A574500403	---	◇ 2	TN11 NL 125 M M 35	1,25	Vc m/min.	-	80-120	-	200-450	25-40	-
A574500497	---	◇ 2	TN11 NL 150 M PK 30	1,5	Vc m/min.	135-165	80-95	125-155	200-575	25-45	25-30
A574500500	---	◇ 10	TN11 NL 150 M U 9035	1,5	Vc m/min.	135-165	80-95	125-155	200-575	25-45	25-30
A574500503	---	◇ 2	TN11 NL 150 M M 35	1,5	Vc m/min.	-	80-120	-	200-450	25-40	-
A574500595	---	◇ 2	TN16 NL 100 M PK 25	1	Vc m/min.	100-150	-	90-125	-	-	-
A574500600	---	◇ 10	TN16 NL 100 M U 9035	1	Vc m/min.	135-165	80-95	125-155	200-575	25-45	25-30
A574500603	---	◇ 2	TN16 NL 100 M M 35	1	Vc m/min.	-	80-120	-	200-450	25-40	-
A574500695	---	◇ 2	TN16 NL 125 M PK 25	1,25	Vc m/min.	100-150	-	90-125	-	-	-
A574500700	---	◇ 10	TN16 NL 125 M U 9035	1,25	Vc m/min.	135-165	80-95	125-155	200-575	25-45	25-30
A574500703	---	◇ 2	TN16 NL 125 M M 35	1,25	Vc m/min.	-	80-120	-	200-450	25-40	-
A574500795	---	◇ 2	TN16 NL 150 M PK 25	1,5	Vc m/min.	100-150	-	90-125	-	-	-
A574500800	---	◇ 10	TN16 NL 150 M U 9035	1,5	Vc m/min.	135-165	80-95	125-155	200-575	25-45	25-30
A574500803	---	◇ 2	TN16 NL 150 M M 35	1,5	Vc m/min.	-	80-120	-	200-450	25-40	-
A574500895	---	◇ 2	TN16 NL 175 M PK 25	1,75	Vc m/min.	100-150	-	90-125	-	-	-
A574500900	---	◇ 10	TN16 NL 175 M U 9035	1,75	Vc m/min.	135-165	80-95	125-155	200-575	25-45	25-30
A574500903	---	◇ 2	TN16 NL 175 M M 35	1,75	Vc m/min.	-	80-120	-	200-450	25-40	-
A574500995	---	◇ 2	TN16 NL 200 M PK 25	2	Vc m/min.	100-150	-	90-125	-	-	-
A574501000	---	◇ 10	TN16 NL 200 M U 9035	2	Vc m/min.	135-165	80-95	125-155	200-575	25-45	25-30
A574501003	---	◇ 2	TN16 NL 200 M M 35	2	Vc m/min.	-	80-120	-	200-450	25-40	-



Set of insert in hard metal, with internal threading

Set of inserts with complete profile, for internal, left-hand threading ISO 60°, for threading operations on all materials.

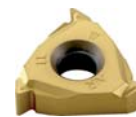


Code	€	Type	pitch (mm)		P	M	K	N	S	H
A579691305	---	◇ TN 11 IL M PK 25	0,5x2-0,75x2-1x2-1,25x2-1,5x2	Vc m/min.	100-150	-	90-125	-	-	-
A579691315	---	◇ TN 16 IL M PK 25	0,75x2-1x2-1,25x2-1,5x2-1,75x2	Vc m/min.	100-150	-	90-125	-	-	-



Insert in hard metal, with internal threading

Insert with complete profile, for right-hand internal threading Whitworth 55°, for threading operations on all materials.



NR-W

Code	€	Pz.	Type	thread/1"		P	M	K	N	S	H
A573300080	---	◇ 10	TN11 NR 140 W U 9035	14	Vc m/min.	135-165	80-95	125-155	200-575	25-45	25-30
A573300090	---	◇ 10	TN11 NR 190 W U 9035	19	Vc m/min.	135-165	80-95	125-155	200-575	25-45	25-30
A573300260	---	◇ 10	TN16 NR 080 W U 9035	8	Vc m/min.	135-165	80-95	125-155	200-575	25-45	25-30
A573300280	---	◇ 10	TN16 NR 100 W U 9035	10	Vc m/min.	135-165	80-95	125-155	200-575	25-45	25-30
A573300290	---	◇ 10	TN16 NR 110 W U 9035	11	Vc m/min.	135-165	80-95	125-155	200-575	25-45	25-30
A573300310	---	◇ 10	TN16 NR 140 W U 9035	14	Vc m/min.	135-165	80-95	125-155	200-575	25-45	25-30
A573300320	---	◇ 10	TN16 NR 160 W U 9035	16	Vc m/min.	135-165	80-95	125-155	200-575	25-45	25-30
A573300330	---	◇ 10	TN16 NR 190 W U 9035	19	Vc m/min.	135-165	80-95	125-155	200-575	25-45	25-30