

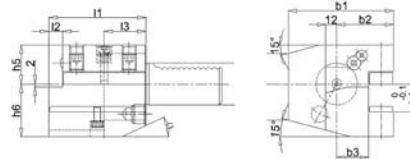


VDI C1 shape tool holder, right axial version

DIN 69880

VDI toolholder C1 shape **right axial version**, hardened and ground shaft and contact surface, external coolant supply.

Application: for external machining.



Code	€	VDI	h1 (mm)	b1 (mm)	b2 (mm)	b3 (mm)	h5 (mm)	h6 (mm)	l1 (mm)	l2 (mm)	l3 (mm)
C352900001	◇	30	20/16	70	70	17	28	38	70	10	30
C352900004	◇	40	25/20	85	85	21	32,5	48	85	12,5	30
C352900007	◇	50	32/25	100	100	26	35	60	100	16	40

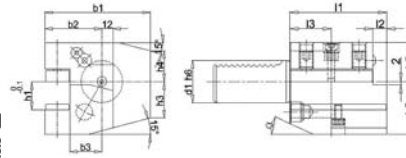


VDI C1 shape tool holder, left axial version

DIN 69880

VDI toolholder C1 shape **left axial version**, hardened and ground shaft and contact surface, external coolant supply.

Application: for external machining.



Code	€	VDI	h1 (mm)	b1 (mm)	b2 (mm)	b3 (mm)	h5 (mm)	h6 (mm)	l1 (mm)	l2 (mm)	l3 (mm)
C352910001	◇	30	20/16	70	70	23	28	38	70	10	30
C352910004	◇	40	25/20	85	85	25,5	32,5	48	85	12,5	30
C352910007	◇	50	32/25	100	100	30,5	35	60	70	16	40

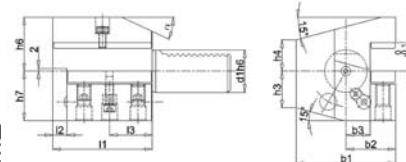


VDI C3 shape tool holder, right axial overhead

DIN 69880

VDI toolholder C3 shape **right axial version**, short overhead, hardened and ground shaft and contact surface, external coolant supply.

Application: for external machining.



Code	€	VDI	h1 (mm)	b1 (mm)	b2 (mm)	b3 (mm)	h6 (mm)	h7 (mm)	l1 (mm)	l2 (mm)	l3 (mm)
C352920001	◇	30	20/16	70	35	17	35	38	70	10	30
C352920004	◇	40	25/20	85	42,5	21	42,5	48	85	12,5	30
C352920007	◇	50	32/25	100	50	26	50	60	100	16	40

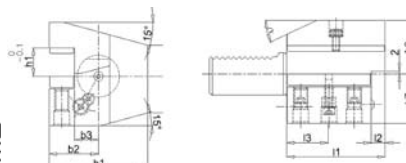


VDI C4 shape tool holder, left axial overhead

DIN 69880

VDI toolholder C4 shape **left axial version**, short overhead, hardened and ground shaft and contact surface, external coolant supply.

Application: for external machining.



Code	€	VDI	h1 (mm)	b1 (mm)	b2 (mm)	b3 (mm)	h7 (mm)	h6 (mm)	l1 (mm)	l2 (mm)	l3 (mm)
C352930001	◇	30	20/16	70	42	23	38	35	70	10	30
C352930004	◇	40	25/20	85	47,5	25,5	48	42,5	85	12,5	30
C352930007	◇	50	20/16	100	55	30,5	60	50	100	16	40