

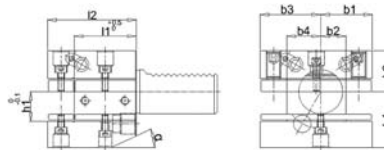


VDI D1 shape tool holder, multi-tool version

DIN 69880

VDI toolholder D1 shape **multi-tool version**, hardened and ground shaft and contact surface, external coolant supply.

Application: for external machining.



VDI TOOLHOLDERS

Code	€	VDI	h1 (mm)	b1 (mm)	b2 (mm)	b4 (mm)	h3 (mm)	h4 (mm)	l1 (mm)	l2 (mm)
C352940001	◇	30	20/16	35	17	23	28	38	42	60
C352940004	◇	40	25/20	42,5	21	25,5	32,5	48	50	72
C352940007	◇	50	32/25	50	26	30,5	35	60	60	85

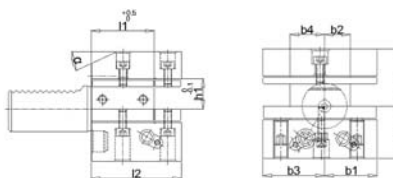


VDI D2 shape tool holder, multi-tool overhead version

DIN 69880

VDI toolholder D2 shape **multi-tool version overhead**, hardened and ground shaft and contact surface, external coolant supply.

Application: for external machining.



Code	€	VDI	h1 (mm)	b1 (mm)	b2 (mm)	b4 (mm)	h3 (mm)	h4 (mm)	l1 (mm)	l2 (mm)
C352960001	◇	30	20/16	35	17	23	35	38	42	60
C352960004	◇	40	25/20	42,5	21	25,5	42,5	48	50	75
C352960007	◇	50	32/25	50	26	30,5	50	60	60	85

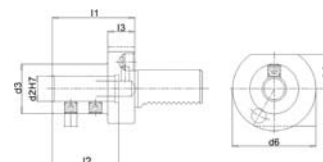


VDI E1 shape tool holder for hole-drilling tools

DIN 69880

VDI toolholder E1 shape **version for drilling tools** with flange system, hardened and ground shaft and contact surface, internal coolant supply.

Application: for cylindrical shank tools.



Code	€	VDI	d2 (mm)	h1 (mm)	d6 (mm)	d3 (mm)	l1 (mm)	l3 (mm)	l2 (mm)
C352970001	◇	30	8	28	68	28	50	22	36
C352970004	◇	30	10	28	68	35	54	22	40
C352970007	◇	30	12	28	68	42	59	22	45
C352970010	◇	30	16	28	68	36	67	22	54
C352970013	◇	30	20	28	68	40	67	22	54
C352970016	◇	30	25	28	68	45	71	22	58
C352970019	◇	30	32	28	68	52	75	22	61
C352970022	◇	30	40	28	68	65	90	22	72
C352970025	◇	40	10	32,5	83	35	54	22	40
C352970028	◇	40	12	32,5	83	42	58	22	45
C352970031	◇	40	16	32,5	83	36	67	22	54

Code	€	VDI	d2 (mm)	h1 (mm)	d6 (mm)	d3 (mm)	l1 (mm)	l3 (mm)	l2 (mm)
C352970034	◇	40	20	32,5	83	40	67	22	54
C352970037	◇	40	25	32,5	83	45	75	22	59
C352970040	◇	40	32	32,5	83	52	75	22	61
C352970043	◇	40	40	32,5	83	65	90	22	73
C352970046	◇	40	50	32,5	83	70	100	22	83
C352970049	◇	50	16	35	98	36	80	30	54
C352970052	◇	50	20	35	98	40	80	30	54
C352970055	◇	50	25	35	98	45	80	30	59
C352970058	◇	50	32	35	98	52	80	30	63
C352970061	◇	50	40	35	98	65	90	30	73
C352970064	◇	50	50	35	98	75	100	30	83

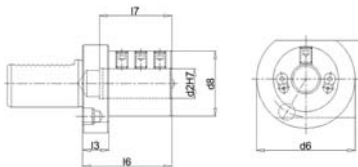


VDI E2 shape tool holder for boring bars

DIN 69880

VDI toolholder E2 shape **version for boring bars**, hardened and ground shaft and contact surface, external coolant supply.

Application: for boring bars.



Code	€	VDI	d2 H7 (mm)	h1 (mm)	d6 (mm)	d8 (mm)	l1 (mm)	l3 (mm)	l6 (mm)
C352980001	◇	30	6	28	68	55	60	22	43
C352980004	◇	30	8	28	68	55	60	22	43
C352980007	◇	30	10	28	68	55	60	22	43
C352980010	◇	30	12	28	68	55	60	22	43
C352980013	◇	30	16	28	68	55	60	22	55
C352980016	◇	30	20	28	68	55	60	22	54
C352980019	◇	30	25	28	68	55	60	22	54
C352980022	◇	30	32	28	68	67	75	22	61
C352980025	◇	30	40	28	68	67	75	22	66

Code	€	VDI	d2 H7 (mm)	h1 (mm)	d6 (mm)	d8 (mm)	l1 (mm)	l3 (mm)	l6 (mm)
C352980028	◇	40	6	32,5	83	55	75	22	43
C352980031	◇	40	8	32,5	83	55	75	22	43
C352980034	◇	40	10	32,5	83	55	75	22	43
C352980037	◇	40	12	32,5	83	55	75	22	58
C352980040	◇	40	16	32,5	83	55	75	22	61
C352980043	◇	40	20	32,5	83	55	75	22	61
C352980046	◇	40	25	32,5	83	55	75	22	61
C352980049	◇	40	32	32,5	83	82	75	22	61
C352980052	◇	40	40	32,5	83	82	90	22	76

◆ Available from stock CDU

◇ Shipping from external warehouse

Next page ➡

← Previous page

Code	€	VDI	d2 H7 (mm)	h1 (mm)	d6 (mm)	d8 (mm)	l1 (mm)	l3 (mm)	l6 (mm)
C352980055	◇	40	50	35	98	98	100	22	86
C352980058	◇	50	12	35	98	68	90	30	71
C352980061	◇	50	16	35	98	68	90	30	76
C352980064	◇	50	20	35	98	68	90	30	76

Code	€	VDI	d2 H7 (mm)	h1 (mm)	d6 (mm)	d8 (mm)	l1 (mm)	l3 (mm)	l6 (mm)
C352980067	◇	50	25	35	98	68	90	30	76
C352980070	◇	50	32	35	98	69	90	30	76
C352980073	◇	50	40	35	98	98	90	30	76
C352980076	◇	50	50	35	98	98	100	30	86



VDI E4 shape tool holder for ER pliers

VDI toolholder E4 shape **version for ER calipers DIN 6499**, hardened and ground shaft and contact surface, external coolant supply.

Application: for mounting of ER-type spring clips.

DIN 69880



Code	€	VDI	ER collet	h1 (mm)	d2 (mm)	d6 (mm)	d12 (mm)	l11 (mm)	l3 (mm)
C352990001	◇	30	16	28	1-10	68	32	48	22
C352990004	◇	30	25	28	2-16	68	42	57	22
C352990007	◇	30	32	28	2-20	68	50	78	22
C352990010	◇	30	40	28	3-30	68	63	80	22
C352990013	◇	40	25	32,5	2-16	83	42	57	22

Code	€	VDI	ER collet	h1 (mm)	d2 (mm)	d6 (mm)	d12 (mm)	l11 (mm)	l3 (mm)
C352990016	◇	40	32	32,5	2-20	83	50	78	22
C352990019	◇	40	40	32,5	3-30	83	63	80	22
C352990022	◇	50	32	35	2-20	98	50	92	30
C352990025	◇	50	40	35	3-30	98	63	80	30

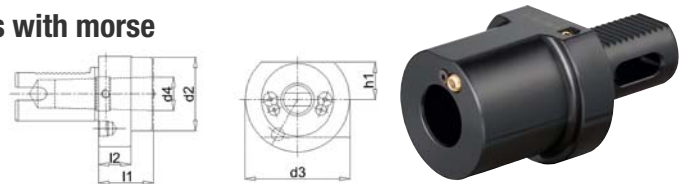


VDI F shape tool holder for mounting tools with morse taper stem

VDI toolholder F shape **tapered morse version**, hardened and ground shaft and contact surface, external coolant supply.

Application: for mounting tools with tapered morse stem.

DIN 69880



Code	€	VDI	Morse taper (MK)	h1 (mm)	d3 (mm)	d2 (mm)	d4 (mm)	l1 (mm)	l2 (mm)
C353010001	◇	30	1	28	68	-	12,065	27	-
C353010004	◇	30	2	28	68	55	17,78	36	27
C353010007	◇	30	3	28	68	55	23,825	66	41
C353010010	◇	40	1	32,5	83	55	12,065	26	22
C353010013	◇	40	2	32,5	83	55	17,78	36	22
C353010016	◇	40	3	32,5	83	58	23,825	36	22

Code	€	VDI	Morse taper (MK)	h1 (mm)	d3 (mm)	d2 (mm)	d4 (mm)	l1 (mm)	l2 (mm)
C353010019	◇	40	4	32,5	83	68	31,267	80	22
C353010022	◇	50	2	35	98	55	17,78	36	30
C353010025	◇	50	3	35	98	58	23,825	45	30
C353010028	◇	50	4	35	98	68	31,267	55	30
C353010031	◇	50	5	35	98	75	44,399	72	30



VDI Z2 shape buffer steel

VDI steel pad Z2 shape, cylindrical shank

Application: VDI slot closing on the turret against dirt and coolant.

DIN 69880



Code	€	VDI	h1 (mm)	d3 (mm)	l1 (mm)	l2 (mm)	Material
C353160001	◇	30	28	68	71	16	steel
C353160004	◇	40	32,5	83	83	20	steel

Code	€	VDI	h1 (mm)	d3 (mm)	l1 (mm)	l2 (mm)	Material
C353160007	◇	50	35	98	98	20	steel



VDI Z2 shape buffer plastic

VDI plastic pad Z2 shape, cylindrical shank

Application: VDI slot closure on the turret against dirt and coolant.

DIN 69880



Code	€	VDI	h1 (mm)	d3 (mm)	l1 (mm)	l2 (mm)	Material
C353170001	◇	30	28	68	71	16	plastic
C353170004	◇	40	32,5	83	83	20	plastic

Code	€	VDI	h1 (mm)	d3 (mm)	l1 (mm)	l2 (mm)	Material
C353170007	◇	50	35	98	98	20	plastic