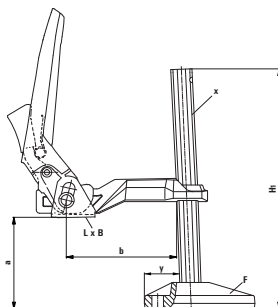




Snap-on bracket for machine tools

Quick bracketing of pieces on machine tools, characterised by a lever mechanism that allows fast locking and unlocking, tilting and height-adjustable contact point, for small boring and milling jobs.

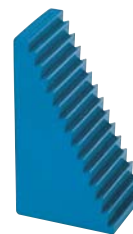
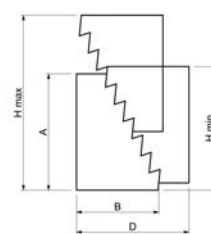
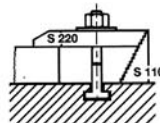
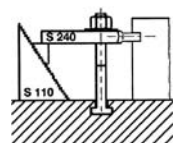


Code	€	Clamping force (N)	a (mm)	b (mm)	H1 (mm)	LxB (mm)	Base length (mm)	Base width (mm)	Base height (mm)	y (mm)	x (mm)	Clamping bore ø (mm)
C604350005	---	3.500	200	100	260	42x25	100	38	25	32	19,5x9,5	10,5
C604350010	---	5.500	200	120	260	42x25	100	38	25	32	22x10,5	13
C604350015	---	7.500	200	120	270	48x31	135	49	33	42	28x11	16,5
C604350020	---	10.000	240	140	320	48x31	135	49	33	42	30x15	16,5



Toothed supports

Toothed supports, in painted improved steel, height step vertical 4.65 mm horizontal 2.3 mm, No. 6500E.



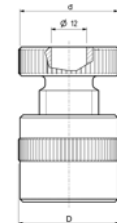
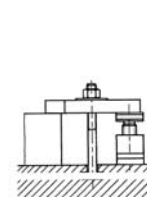
Code	€	A (mm)	B (mm)	C (mm)	D (mm)	H min (mm)	H max (mm)
C600050031	---	31,5	22	30	38	31,5	53
C600050064	---	64,5	36,5	30	70	64,5	105

Code	€	A (mm)	B (mm)	C (mm)	D (mm)	H min (mm)	H max (mm)
C600050128	---	128	68	30	132	128	208



Screw supports

Adjustable screw supports, in painted improved steel, No. 6400.



Code	€	H min (mm)	H max (mm)	d (mm)	D (mm)	Max force (kN)
C600100038	---	40*	50	34	34	20
C600100050	---	54	70	50	50	60
C600100070	---	73	100	50	50	60

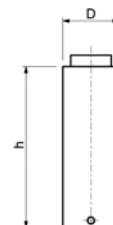
Code	€	H min (mm)	H max (mm)	d (mm)	D (mm)	Max force (kN)
C600100100	---	100	140	65	70	105
C600100140	---	140	210	70	80	180
C600100190	---	190	300	80	100	360

* Without hole.



Extension for screw support

Extension for screw support that allow the extension in height of the support, in painted improved steel.



Code	€	D (mm)	h (mm)
C600150005	---	35	25
C600150010	---	35	50
C600150015	---	35	75
C600150020	---	35	100
C600150025	---	50	50
C600150030	---	50	75

Code	€	D (mm)	h (mm)
C600150035	---	50	100
C600150040	---	50	150
C600150045	---	70	50
C600150050	---	70	100
C600150055	---	70	150
C600150060	---	70	200