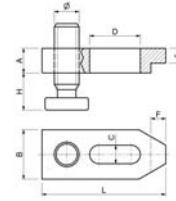




Adjustable clamps with square thread screw

Adjustable clamps with square thread screw, in hardened varnished steel, resistance >700 N/mm², DIN 6314 AT.



Code	€	A (mm)	B (mm)	L (mm)	H (mm)	C (mm)	D (mm)	ø (mm)	E (mm)	F (mm)	Screws (M)
C600570005	---	20	40	100	15-50	15	40	20x4	12	12	12-14
C600570010	---	20	40	125	15-50	15	45	20x4	12	12	12-14
C600570015	---	20	40	160	15-50	15	60	20x4	12	12	12-14
C600570020	---	25	50	125	15-45	19	45	20x4	15	15	16-18
C600570025	---	25	50	160	15-75	19	60	30x6	15	15	16-18
C600570030	---	25	50	200	15-75	19	80	30x6	15	15	16-18

Code	€	A (mm)	B (mm)	L (mm)	H (mm)	C (mm)	D (mm)	ø (mm)	E (mm)	F (mm)	Screws (M)
C600570035	---	30	60	160	15-70	23	60	30x6	15	20	20-22
C600570040	---	30	60	200	15-70	23	80	30x6	15	20	20-22
C600570045	---	40	70	200	15-85	27	80	30x6	25	23	24
C600570050	---	40	70	250	15-85	27	100	30x6	25	23	24
C600570055	---	40	70	300	15-85	27	100	30x6	25	23	24

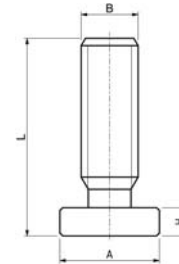


Spare screws for clamps

Spare screw for brackets, TPN square pitch thread in class 8.8 steel, for item C60057.



Code	€	A (mm)	B (mm)	L (mm)	H (mm)
C600580005	---	35	20x4	70	10
C600580010	---	45	30x6	100	15
C600580015	---	70	30x6	125	15

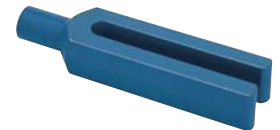
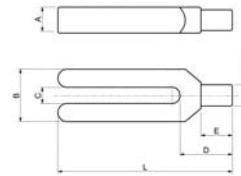


Forked clamps with cylindrical shank

Forked clamps with cylindrical shank, in hardened varnished steel, resistance >600 N/mm², DIN 6315C.



DIN 6315C



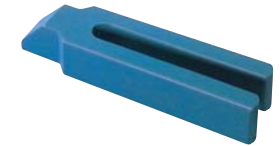
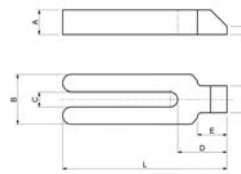
Code	€	A (mm)	B (mm)	L (mm)	C (mm)	D (mm)	E (mm)	ø F (mm)	Screws (M)
C600600005	---	15	30	100	9	30	18	12	8
C600600010	---	20	30	125	11	36	24	16	10
C600600015	---	25	40	160	14	45	30	20	12-14
C600600020	---	25	40	200	14	45	30	20	12-14
C600600025	---	30	50	200	18	55	36	24	16-18
C600600030	---	30	50	250	18	55	36	24	16-18

Code	€	A (mm)	B (mm)	L (mm)	C (mm)	D (mm)	E (mm)	ø F (mm)	Screws (M)
C600600035	---	40	60	250	22	65	45	30	20-22
C600600040	---	40	60	315	22	65	45	30	20-22
C600600045	---	40	70	250	26	80	56	38	24
C600600050	---	40	70	315	26	80	56	38	24
C600600055	---	50	80	315	34	85	56	45	27-30
C600600060	---	50	80	400	34	85	56	45	27-30



Forked clamps with nib

Forked clamps with nib, in hardened varnished steel, resistance >600 N/mm², DIN 6315GN



Code	€	A (mm)	B (mm)	L (mm)	C (mm)	D (mm)	E (mm)	F (mm)	G (mm)	Screws (M)
C600650005	---	15	30	100	9	32	18	16	5	8
C600650010	---	20	30	125	11	38	24	20	6	10
C600650015	---	25	40	160	14	47	30	25	7	12-14
C600650020	---	25	40	200	14	47	30	25	7	12-14
C600650025	---	30	50	200	18	57	36	28	8	16-18
C600650030	---	30	50	250	18	57	36	28	8	16-18

Code	€	A (mm)	B (mm)	L (mm)	C (mm)	D (mm)	E (mm)	F (mm)	G (mm)	Screws (M)
C600650035	---	40	60	250	22	68	45	35	10	20-22
C600650040	---	40	60	315	22	68	45	35	10	20-22
C600650045	---	40	70	250	26	83	56	43	10	24
C600650050	---	40	70	315	26	83	56	43	10	24
C600650055	---	50	80	315	34	88	56	50	12	27-30
C600650060	---	50	80	400	34	88	56	50	12	27-30