



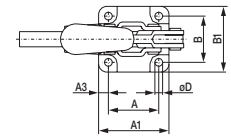
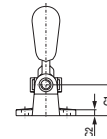
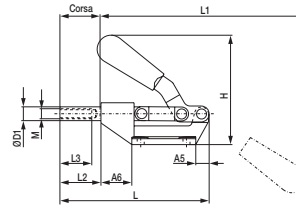
Clamping equipment with push rod

Clamping equipment with push rod, with additional fused and burnished mounting base and rod with inner thread.

Features: galvanized and passivated tools, with stainless steel rivets, PVC handgrip, oil resistant.

Use: in all cases requiring holding forces up to 400 N for glueing, assembly, drilling, and positionings.

The screw has to be ordered separately.



| Code | € | Retaining force (N) | Stroke (mm) | Weight (Kg) | Pressure screw (MxL) | A (mm) | A1 (mm) | A3 (mm) | A5 (mm) | A6 (mm) | B (mm) | B1 (mm) | C1 (mm) | C2 (mm) | ø D (mm) | ø D1 (mm) | L (mm) | L2 (mm) | L3 (mm) | H (mm) |
|------------|---|---------------------|-------------|-------------|----------------------|--------|---------|---------|---------|---------|--------|---------|---------|---------|----------|-----------|--------|---------|---------|--------|
| C603120005 | ◆ | 2700 | 32 | 0,32 | 8x75,5 | 36,6 | 51,1 | 7,1 | 14,7 | 21,8 | 33,3 | 48 | 24,4 | 5,1 | 6,6 | 11,9 | 121,9 | 32,8 | 25,4 | 83,3 |
| C603120010 | ◆ | 3500 | 41 | 0,68 | 10x77 | 41,1 | 57,2 | 7,9 | - | 35,8 | 41,1 | 57,2 | 43,2 | 6,4 | 8,6 | 15,7 | 170,7 | 62 | 31,8 | 112 |



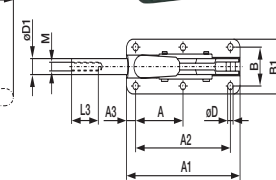
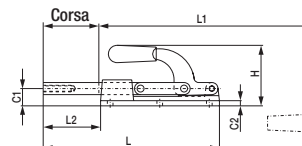
Clamping equipment with push rod

Clamping equipment with compression rod Additional mounting base, melted and burnished, and rod with inner thread.

Features: galvanized and passivated tools, with stainless steel rivets, PVC handgrip, oil resistant.

Use: in all fields requiring compression forces up to 30.000 N for assembly, drilling, testing and positionings.

The screw has to be ordered separately.



| Code | € | Retaining force (N) | Stroke (mm) | Weight (Kg) | Pressure screw (MxL) | A (mm) | A1 (mm) | A2 (mm) | A3 (mm) | B (mm) | B1 (mm) | C1 (mm) | C2 (mm) | ø D (mm) | ø D1 (mm) | L (mm) | L2 (mm) | L3 (mm) | H (mm) |
|------------|---|---------------------|-------------|-------------|----------------------|--------|---------|---------|---------|--------|---------|---------|---------|----------|-----------|--------|---------|---------|--------|
| C603460005 | ◆ | 3600 | 41 | 0,63 | 8x75,5 | 35,1 | 108 | 76,5 | 16 | 41,4 | 55,9 | 17,5 | 5,1 | 7,1 | 13 | 152,9 | 44,7 | 25,4 | 89,4 |
| C603460010 | ◆ | 11000 | 51 | 0,9 | 10x77 | 35,1 | 128 | 75,9 | 12,7 | 41,1 | 57,9 | 20,6 | 4,1 | 8,6 | 16 | 152,9 | 49,8 | 31,8 | 87,6 |
| C603460015 | ◆ | 33400 | 101,5 | 3,2 | 12x88 | 90,4 | 216,7 | 180,8 | 17,5 | 54,1 | 76,2 | 31,8 | 9,7 | 10,4 | 22,1 | 321,3 | 104,6 | 50,8 | 109,2 |



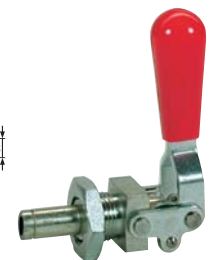
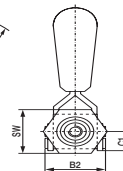
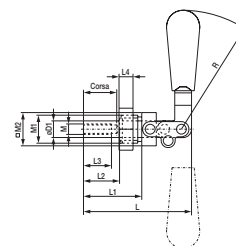
Clamping equipment with push rod

Compact shape clamping equipment with push rod screwable, possibility to fix the equipment with a single hole. Hence, it can be fixed in any position and oriented in optimal mode with respect to the base. Equipped with additional mounting base, front external thread for direct mounting, compression rod with inner thread.

Features: galvanized and passivated tools, with stainless steel rivets, PVC handgrip, oil resistant.

Use: in all cases requiring compression forces up to 30.000 N for glueing, assembly, drilling and positionings

Supplied with standard fixing nut, screw and bracket have to be ordered separately.



| Code | € | Retaining force (N) | Stroke (mm) | Pressure screw (MxL) | Bracket code | Weight (Kg) | B2 (mm) | C1 (mm) | ø D1 (mm) | L (mm) | L1 (mm) | L2 (mm) | L3 (mm) | L4 (mm) | M1 (mm) | R (mm) | SW (mm) |
|------------|---|---------------------|-------------|----------------------|--------------|-------------|---------|---------|-----------|--------|---------|---------|---------|---------|---------|--------|---------|
| C603060005 | ◆ | 900 | 19 | 6x49 | C603580005 | 0,11 | 26,2 | 11,9 | 9,4 | 61,7 | 33,3 | 24,9 | 16 | 6,1 | 16x1,5 | 68 | 24 |
| C603060010 | ◆ | 1300 | 38 | 6x49 | C603580010 | 0,28 | 33 | 15 | 11,2 | 108 | 55,4 | 46,7 | 25,4 | 6,1 | 20x1,5 | 92 | 30 |
| C603060015 | ◆ | 3000 | 66 | 6x49 | C603580015 | 0,75 | 46 | 20,6 | 15,7 | 169,7 | 91,9 | 82,8 | 31,8 | 6,1 | 27x2 | 125 | 41 |