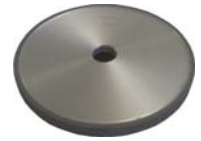
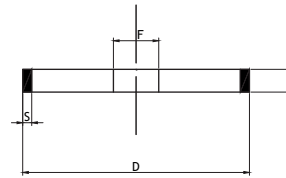




### Diamond cutting disc, resinoid bonding, shape 1 A 1

Diamond grinding wheels, **resinoid bonding**, 1 A 1 shape; for grinding and sharpening of tools; the resinoid binding allows dry machining or with coolant.

**Diamond coated:** grinding of sintered carbides, glass, ceramic materials, resins, stones, etc..



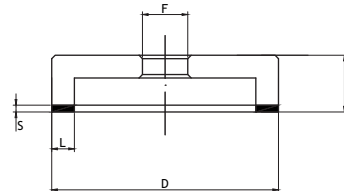
Code	€	Type	D (mm)	L (mm)	S (mm)	F (mm)	Grain	Concentration
L451350105	◆	Diamond	100	10	3	20	D 126	C 75



### Diamond cutting disc, resinoid bonding, shape 6 A 2

Diamond grinding wheels, **resinoid bonding**, 6 A 2 shape; for grinding and sharpening of tools; the resinoid binding allows dry machining or with coolant.

**Diamond coated:** grinding of sintered carbides, glass, ceramic materials, resins, stones, etc..



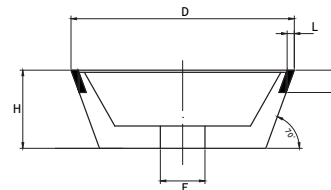
Code	€	Type	D (mm)	L (mm)	S (mm)	H (mm)	F (mm)	Grain	Concentration
L451400105	◆	Diamond	100	10	3	22	20	D 126	C 75



### Diamond cutting disc, resinoid bonding, shape 11 V 9

Diamond grinding wheels, **resinoid bonding**, 11 V 9 shape; for grinding and sharpening of tools; the resinoid binding allows dry machining or with coolant.

**Diamond coated:** grinding of sintered carbides, glass, ceramic materials, resins, stones, etc..



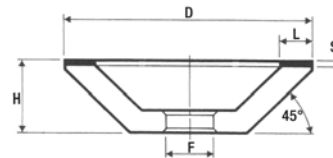
Code	€	Type	D (mm)	L (mm)	S (mm)	H (mm)	F (mm)	Grain	Concentration
L451450105	◆	Diamond	100	3	10	35	20	D 126	C 75



### Grinding wheels with diamond bonded resinoid, form 12 A 2/45 °

Grinding wheels **diamond bonded resinoid**, form 12 A 2/45 °, for the **grinding and sharpening** of tools, the resinoid binder allows both dry and refrigerant processing.

**Diamond:** sharpening of sintered carbides, glass, ceramic materials, resins, stones, etc.



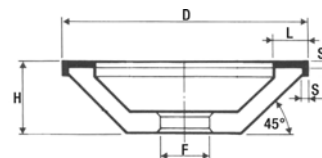
Code	€	Type	D (mm)	L (mm)	S (mm)	H (mm)	F (mm)	Grain	Concentration
L451550100	◆	Diamond	100	10	3	22	20	D 126	C 75



### Grinding wheels with diamond bonded resinoid, form 12 C 9

Grinding wheel **diamond-bonded resinoid**, form 12 C 9, for the **grinding and sharpening** of tools, the resinoid binder allows both dry and refrigerant processing.

**Diamond:** carbide sharpening sintered, glass, ceramic materials, resins, stones etc.



Code	€	Type	D (mm)	L (mm)	S (mm)	H (mm)	F (mm)	Grain	Concentration
L451600100	◆	Diamond	100	10+4	3	25	20	D 126	C 75



### Grinding wheel dressing bar

Special dresser bar for cleaning and dressing of diamond and CBN (Borazon) grinding wheels with ceramic binding.



Code	€	Dimensions (mm)	Length (mm)
L451500005	◆	25x25	100