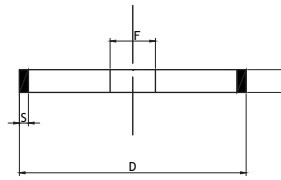




### Diamond cutting disc/CBN, resin bonding , shape 1 A 1

Diamond grinding wheels, **resinoid binding**, 1 A 1 shape; for grinding and sharpening of tools; the resinoid binding allows dry machining or with coolant.

**Diamond coated:** grinding of sintered carbides, glass, ceramic materials, resins, stones, etc..



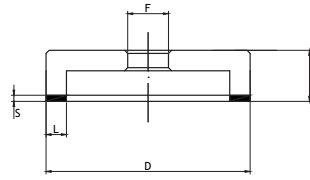
L45135	€	Type	D (mm)	L (mm)	S (mm)	F (mm)	Grain	Concentration
L451350105		◆	100	10	3	20	D 126	75



### Diamond cutting disc/CBN, resin bonding , shape 6 A 2

Diamond grinding wheels, **resinoid binding**, 6 A 2 shape; for grinding and sharpening of tools; the resinoid binding allows dry machining or with coolant.

**Diamond coated:** grinding of sintered carbides, glass, ceramic materials, resins, stones, etc..



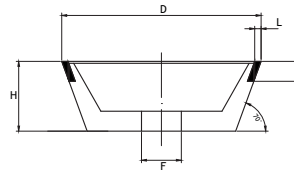
L45140	€	Type	D (mm)	L (mm)	S (mm)	H (mm)	F (mm)	Grain	Concentration
L451400105		◆	100	10	3	22	20	D 126	75



### Diamond cutting disc/CBN, resin bonding , shape 11 V 9

Diamond grinding wheels, **resinoid binding**, 11 V 9 shape; for grinding and sharpening of tools; the resinoid binding allows dry machining or with coolant.

**Diamond coated:** grinding of sintered carbides, glass, ceramic materials, resins, stones, etc..



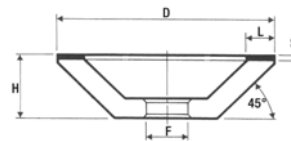
L45145	€	Type	D (mm)	L (mm)	S (mm)	H (mm)	F (mm)	Grain	Concentration
L451450105		◆	100	3	10	35	20	D 126	75



### Grinding wheels with diamond bonded resinoid, form 12 A 2/45 °

Grinding wheels **diamond bonded resinoid**, form 12 A 2/45 °, for the **grinding and sharpening** of tools, the resinoid binder allows both dry and refrigerant processing.

**Diamond:** sharpening of sintered carbides, glass, ceramic materials, resins, stones, etc.



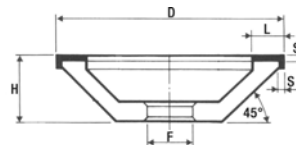
L45155	€	Type	D (mm)	L (mm)	S (mm)	H (mm)	F (mm)	Grain	Concentration
L451550100		◆	100	10	3	22	20	D 126	75



### Grinding wheels with diamond bonded resinoid, form 12 C 9

Grinding wheel **diamond-bonded resinoid**, form 12 C 9, for the **grinding and sharpening** of tools, the resinoid binder allows both dry and refrigerant processing.

**Diamond:** carbide sharpening sintered, glass, ceramic materials, resins, stones etc.



L45160	€	Type	D (mm)	L (mm)	S (mm)	H (mm)	F (mm)	Grain	Concentration
L451600100		◆	100	10+4	3	25	20	D 126	75