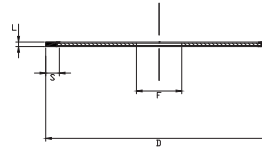




Diamond cutting disc, resin bonding , shape 1 A 1 R

Diamond grinding wheels, **resinoid binding**, 1 A 1 R shape; for fast and precise parting , dry or with coolant: sintered carbides, glass, ceramic materials, resins, stones, etc.

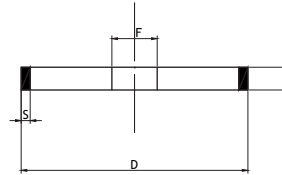


L45130	€	D (mm)	L (mm)	S (mm)	F (mm)	Grain	Concentration
L451300105	---	100	1	5	20	D 151	100



Diamond cutting disc/CBN, resin bonding , shape 1 A 1

Diamond grinding wheels, **resinoid binding**, 1 A 1 shape; for grinding and sharpening of tools; the resinoid binding allows dry machining or with coolant.
Diamond coated: grinding of sintered carbides, glass, ceramic materials, resins, stones, etc..

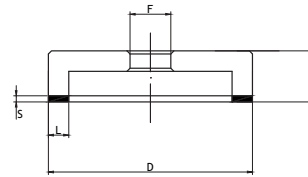


L45135	€	Type	D (mm)	L (mm)	S (mm)	F (mm)	Grain	Concentration
L451350105	---	Diamond	100	10	3	20	D 126	75



Diamond cutting disc/CBN, resin bonding , shape 6 A 2

Diamond grinding wheels, **resinoid binding**, 6 A 2 shape; for grinding and sharpening of tools; the resinoid binding allows dry machining or with coolant.
Diamond coated: grinding of sintered carbides, glass, ceramic materials, resins, stones, etc..

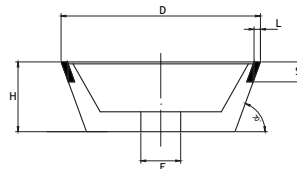


L45140	€	Type	D (mm)	L (mm)	S (mm)	H (mm)	F (mm)	Grain	Concentration
L451400105	---	Diamond	100	10	3	22	20	D 126	75



Diamond cutting disc/CBN, resin bonding , shape 11 V 9

Diamond grinding wheels, **resinoid binding**, 11 V 9 shape; for grinding and sharpening of tools; the resinoid binding allows dry machining or with coolant.
Diamond coated: grinding of sintered carbides, glass, ceramic materials, resins, stones, etc..

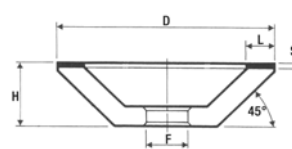


L45145	€	Type	D (mm)	L (mm)	S (mm)	H (mm)	F (mm)	Grain	Concentration
L451450105	---	Diamond	100	3	10	35	20	D 126	75



Grinding wheels with diamond bonded resinoid, form 12 A 2/45 °

Grinding wheels **diamond bonded resinoid**, form 12 A 2/45 °, for the **grinding and sharpening** of tools, the resinoid binder allows both dry and refrigerant processing.
Diamond: sharpening of sintered carbides, glass, ceramic materials, resins, stones, etc.



L45155	€	Type	D (mm)	L (mm)	S (mm)	H (mm)	F (mm)	Grain	Concentration
L451550100	---	Diamond	100	10	3	22	20	D 126	75